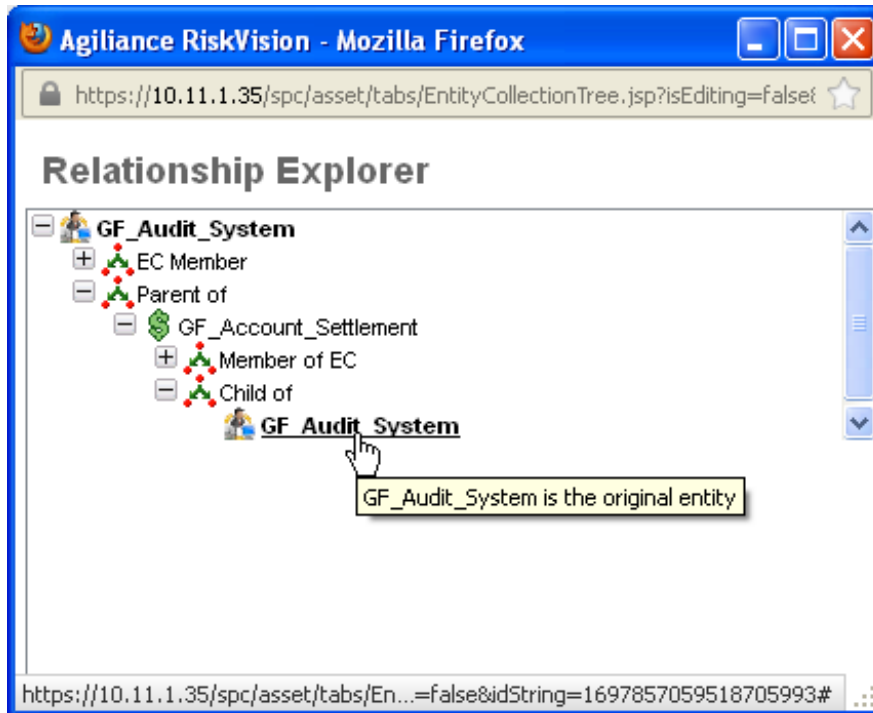


Relationship Explorer

The **Relationships** tab for an entity or entity collection shows only the direct relationships of an entity or entity collection and not the indirect relationships. That is, the relationships of one or more entities or entity collections that are related to other entity or entity collection. The **Relationship Explorer** window allows you to drill down into a context of interdependence with other entities and entity collections and can be used to show all of the dependencies that a particular entity collection or entities, and not just those that are one level removed from that entity collection.

To open the **Relationship Explorer** window, select an entity or entity collection to open its details page, click the **Relationships** tab, and then click **Relationship Explorer** at the top right corner of the view.



At the top of the **Relationship Explorer** window, you will notice the entity (or entity collection) as a root. When you expand the root, any established relationships will appear. Expand each relationship type to see with what entities that the root entity is associated. You can also expand other entities to see if those entities have a relationship with any other entities, and so forth. This will provide an overview of the dependencies of the root entity or entity collection with the other entities or entity collections.