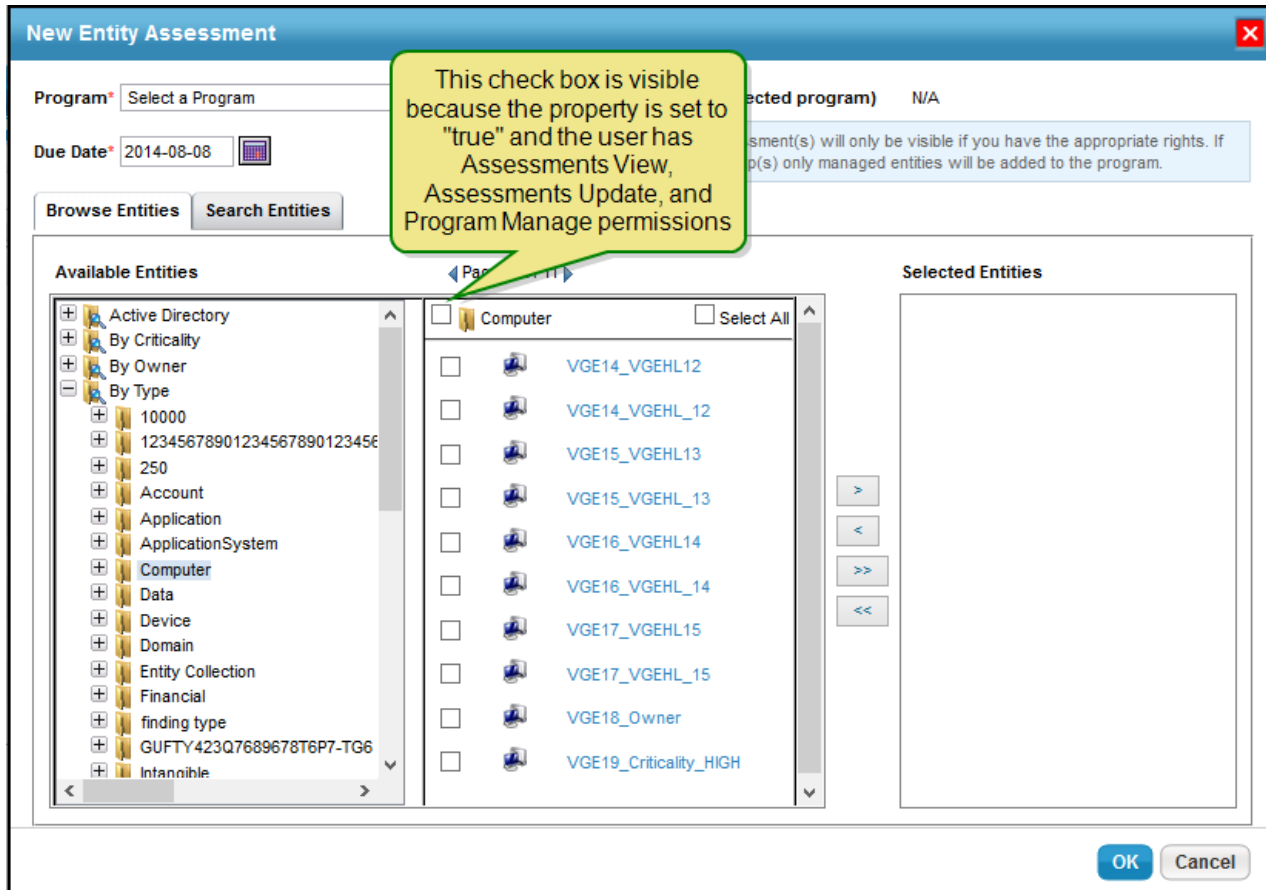


Controlling Dynamic Group Visibility in Assessment Creation

Dynamic groups are shown by default in the New Entity Assessment dialog to users with Program View and Program Manage permissions. To help prevent accidental inclusion of dynamic groups as a whole in assessments, you can hide the checkbox next to a dynamic group in the New Entity Assessment dialog using the `dynamicGroup.selection.visible` property. When you set the property to "false," you can no longer select the dynamic group as a whole, but will still be able to select individual entities that are part of a dynamic group.



New Entity Assessment



Program* Vendor Program001

(Selected program) 30 Days

Due Date* 2014-08-31

Assessment(s) will only be visible if you have the appropriate rights. If only managed entities will be added to the program.

Browse Entities Search Entities

This check box is visible because the property is set to "true" and the user has Assessments View, Assessments Update, and Program Manage permissions

Available Entities

- All Vendors
- Engagements
 - By Assessment Due Date
 - By Assessment Workflow Stage
 - By Level
 - By Type
 - Default Type
 - General
 - IT Service
 - Country

- IT Service Select All
- Default Engagement
-
-

Selected Entities

-

>
<
>>
<<

OK Cancel