

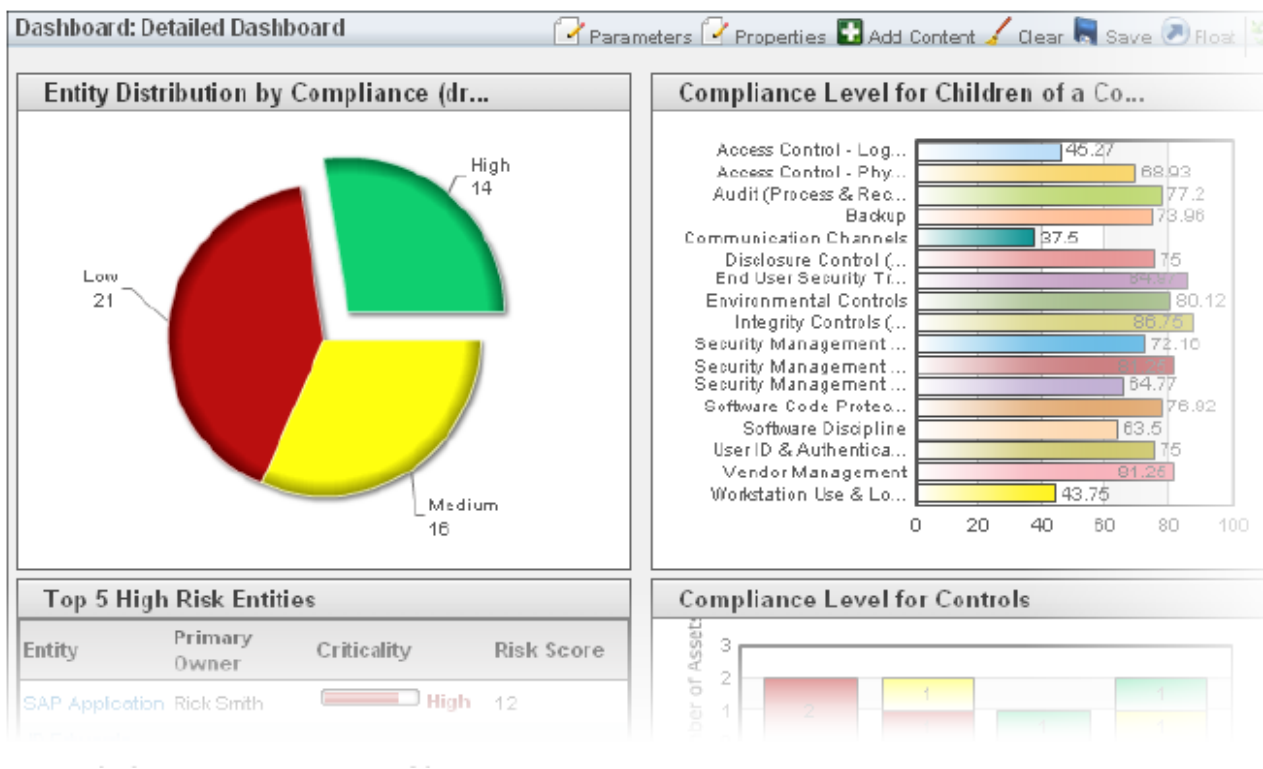
## Adding Charts

A dashboard can contain any RiskVision solution chart. The chart must be defined before you can add it to a dashboard. However, each dashboard can run the chart with different parameters.

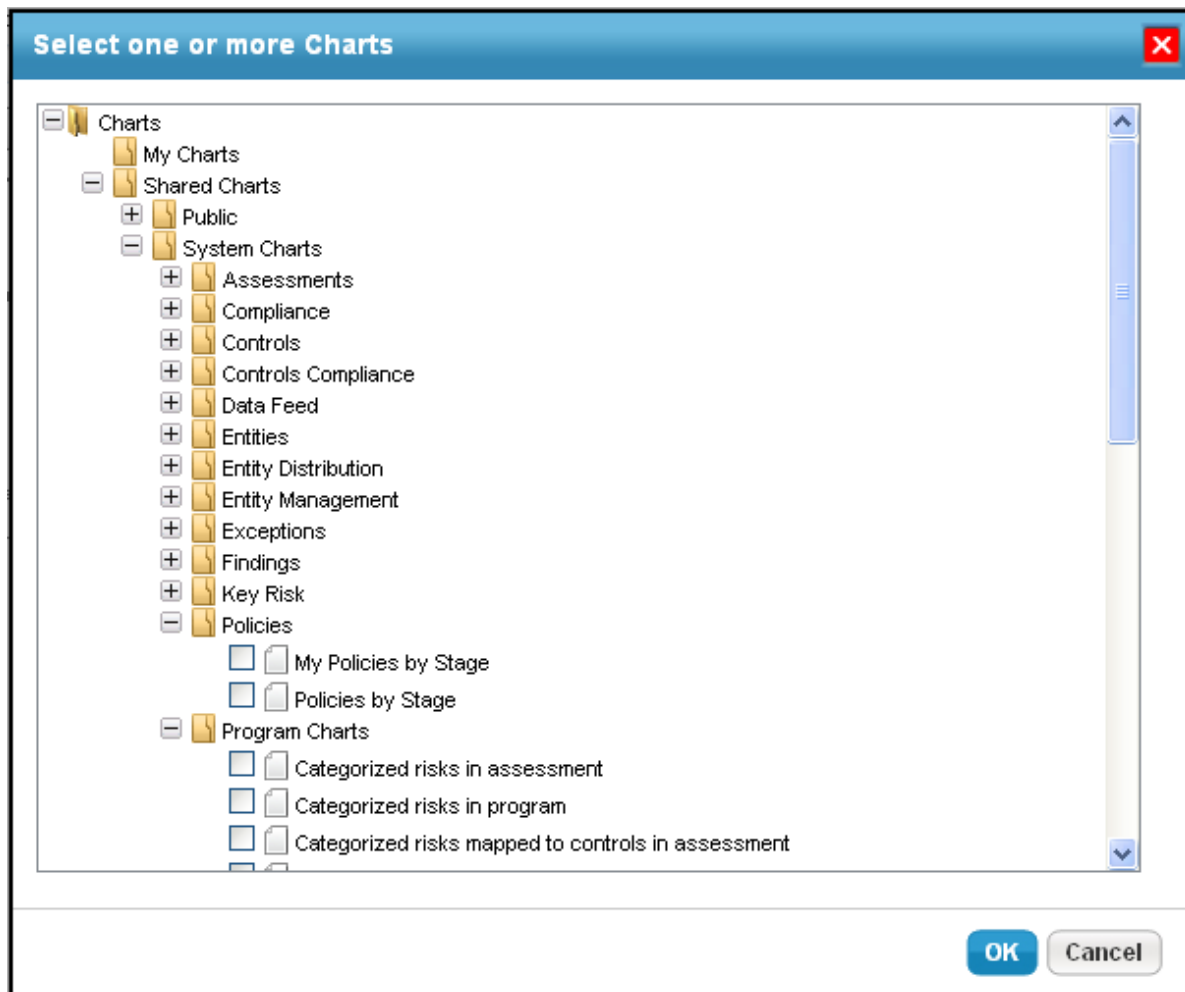
### To add a chart:

1. Go to **Analytics > Dashboards and Reports**.
2. Locate the dashboard to which you want to add a chart, and open the details.
  - Expand the **Dashboard** groups in the navigation pane.
  - Select the group to display a list of dashboards.
  - Select the dashboard, and click **Details**.

If chart data is available, the chart runs and displays the results on the Dashboard Details page.




3. Click **Add Content**. The **Select one or more Charts** dialog appears.



4. Locate and select the charts you want to add.

5. Click **OK**.

The chart displays on the dashboard details page with the chart results if data is available and no parameters are required. Otherwise, the chart displays with a parameter error.

Threats by PS and ALE			
1-1 of 1		Page 1 of 1	
Risk Category	Risk Title	Protection Score	Annual Loss Expectancy (ALE)
<div style="background-color: #ffe6e6; padding: 5px;">  Unable to load data: You must provide values for the parameter Asset.id1 because there are no default values         </div>			