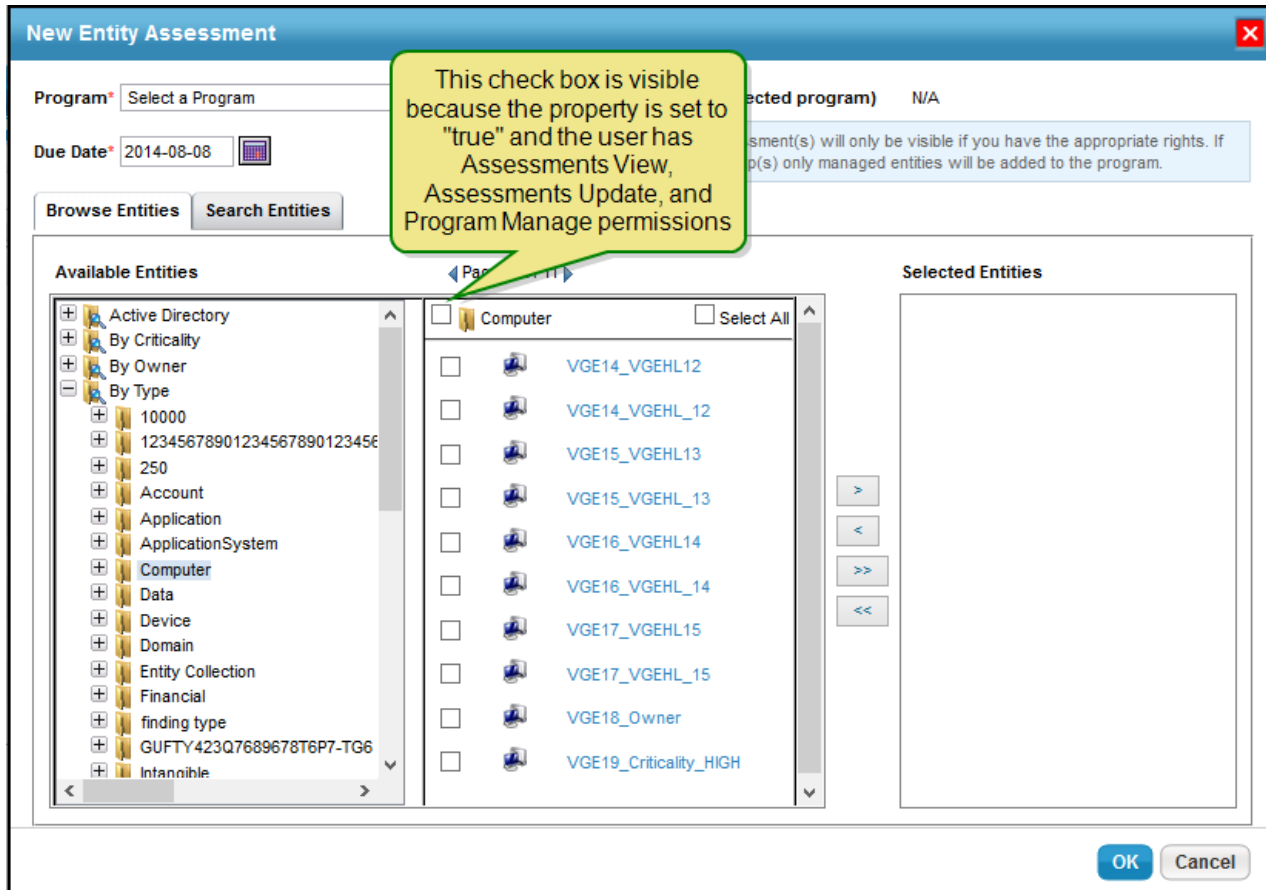
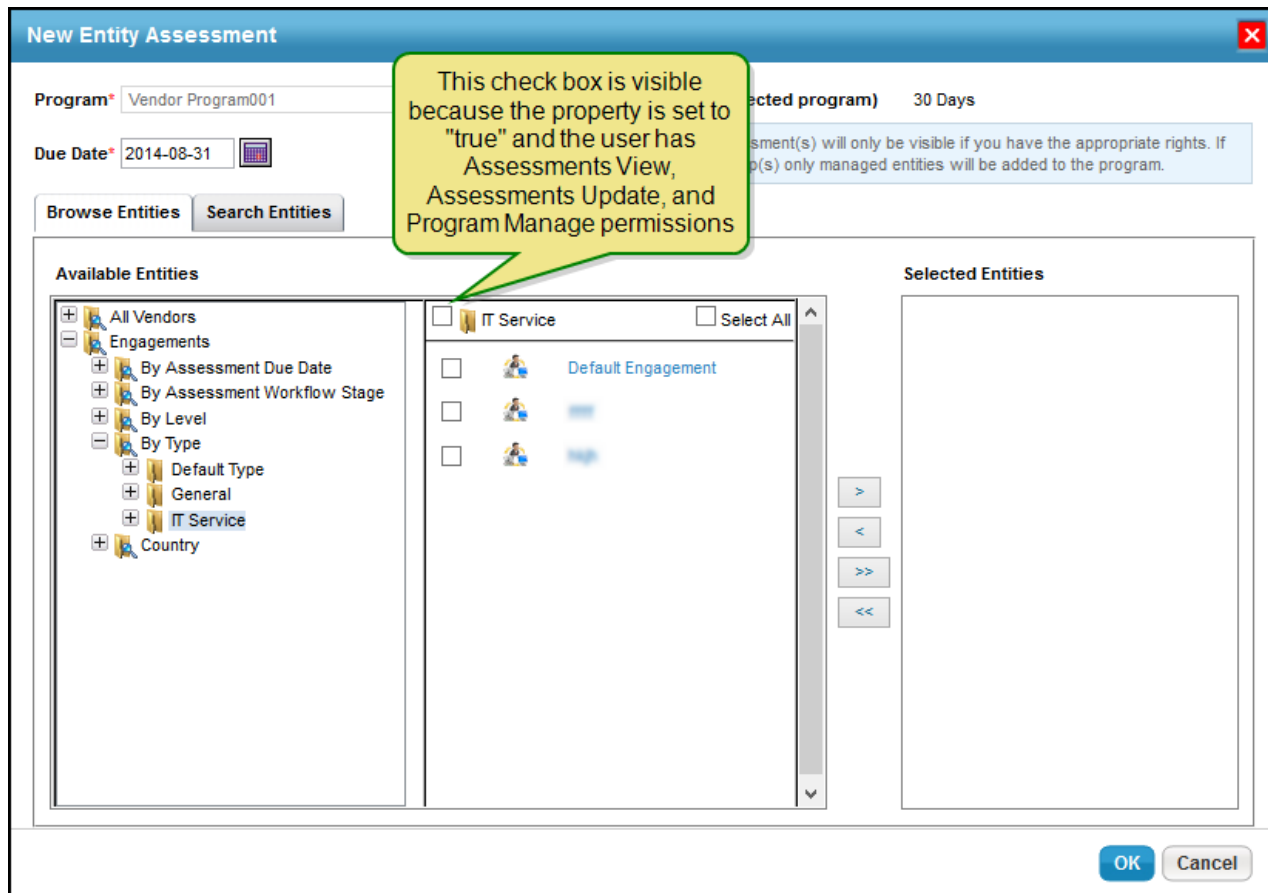


## Controlling Dynamic Group Visibility in Assessment Creation

Dynamic groups are shown by default in the New Entity Assessment dialog to users with Program View and Program Manage permissions. To help prevent accidental inclusion of dynamic groups as a whole in assessments, you can hide the checkbox next to a dynamic group in the New Entity Assessment dialog using the `dynamicGroup.selection.visible` property. When you set the property to "false," you can no longer select the dynamic group as a whole, but will still be able to select individual entities that are part of a dynamic group.





The **Propagation** tab on the assessment details page and the **Propagate Control Results** option in the **More Actions** drop-down list on the **Assessments** tab of the **Program** details page are shown by default for users who have the Assessment Update and/or Assessment Manage permissions. These features are visible in both Compliance Manager and Enterprise Risk Manager applications. If you do not want to implement the propagation feature in your use cases, you can hide it by mentioning the `enable.propagation = false` property in the `agilance.properties` file.