

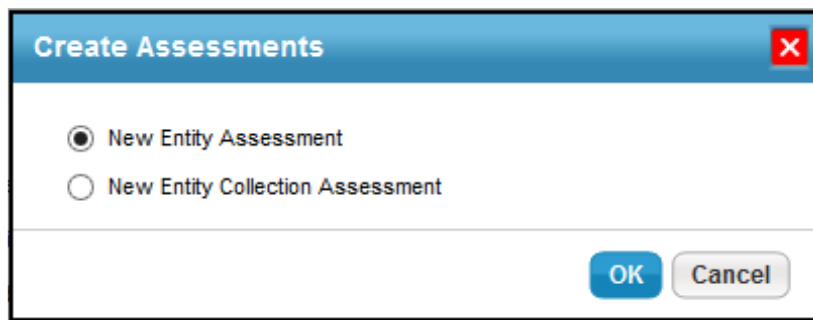
Creating an Entity Assessment

Creating an assessment consists of choosing a program and entities. The program specifies many of the details and selections of the assessment, which can be applied to any number of entities. In order to create an entity assessment, your user role must have Assessments View and Assessments Update permissions. With these permissions, you can create assessments for standalone entities and entities that are part of a dynamic group. For information about the property setting and permission to include a whole dynamic group in an assessment, see [Controlling Dynamic Group Visibility in Assessment Creation](#).

Before creating an assessment, you must create a program.

To create and launch a new assessment:

1. Go to **Assessments > Assessments** page.
2. Click **Create**.



The Create Assessments dialog.

3. Select **New Entity Assessment**.

New Entity Assessment ✖

Program* SystemUnit ▼ Default Duration (from selected program) 30 Days

Due Date* 2013-10-27 📅 ⓘ Note: The created assessment(s) will only be visible if you have the appropriate rights.

Browse Entities Search Entities

Available Entities ◀ Page: 3 of 4 ▶

- Active Directory
- By Criticality
- By Type
- My Entities**
- Newly Discovered Entities
- Organization Hierarchy
- My Favorites
- Recently Viewed

My Entities Select All

| | | |
|-------------------------------------|--|--------------------|
| <input type="checkbox"/> | | m1 |
| <input type="checkbox"/> | | m2 |
| <input type="checkbox"/> | | m3 |
| <input type="checkbox"/> | | Medium |
| <input type="checkbox"/> | | Medium1 |
| <input checked="" type="checkbox"/> | | PDA |
| <input type="checkbox"/> | | POC |
| <input type="checkbox"/> | | sd |
| <input type="checkbox"/> | | TCA14439-ENT1 |
| <input type="checkbox"/> | | Unknow Criticality |

>

Click to add selection

>>

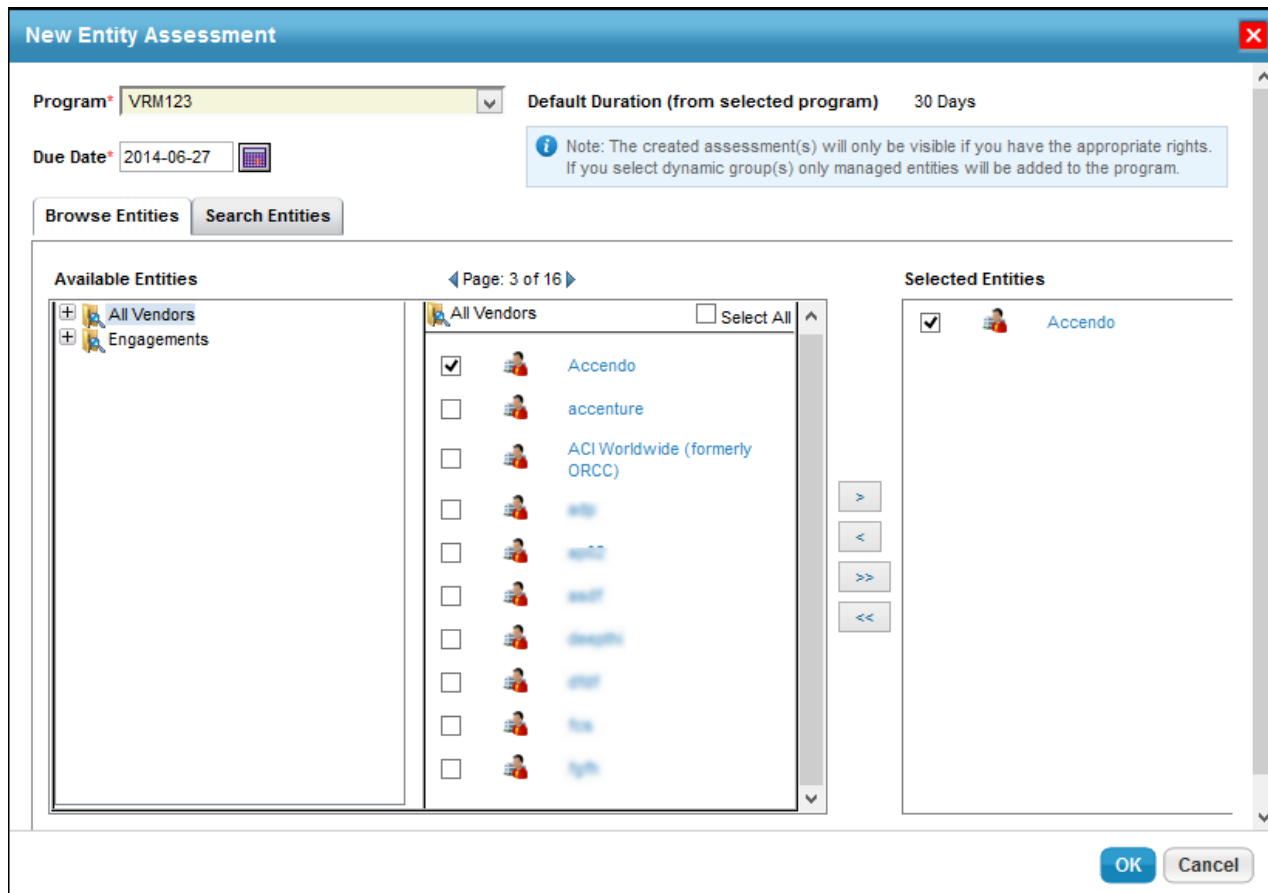
<<

Selected Entities

PDA

OK Cancel

The New Entity Assessment dialog.



4. Select a program in the **Program** dropdown list. The default duration associated with the program is displayed, and the due date is automatically set to those many days from the current date. You can revise the due date manually.
5. Select at least one entity to assess. Within the **Available Entities** of **Browse Entities** tab, expand the group in the tree containing the entity you want to assess, or click the **Search Entities** tab to find the entity using search criteria. To specify search criteria, select a field in the first drop-down box, then select a condition in the second drop-down box, and enter the search value in the box. Click + to add a new search condition. Click **Search** to retrieve the results for selecting entity(s). After the entity(s) is found, select desired entities by checking the box next to them. Clicking the entity title pops up a window to display the entity's details.
6. Click **OK**.

Launching an assessment can be a time-consuming process. If you close the dialog, you will be notified when the assessment has actually launched.

If you have to create assessments for entities imported without the primary owner, make sure to assign the primary owner after importing entities so that entity assessments show up in the **Assessments** page.

There are other alternative methods of creating an assessment, but then the assessment created is specific to the program or entity. The alternate method of assessment creation are given below:

- The **Programs** page;
- The **Entities** page, within the **Entities Details** page; and
- The **Entities** page. Click **More Action > Copy Entities**.

