

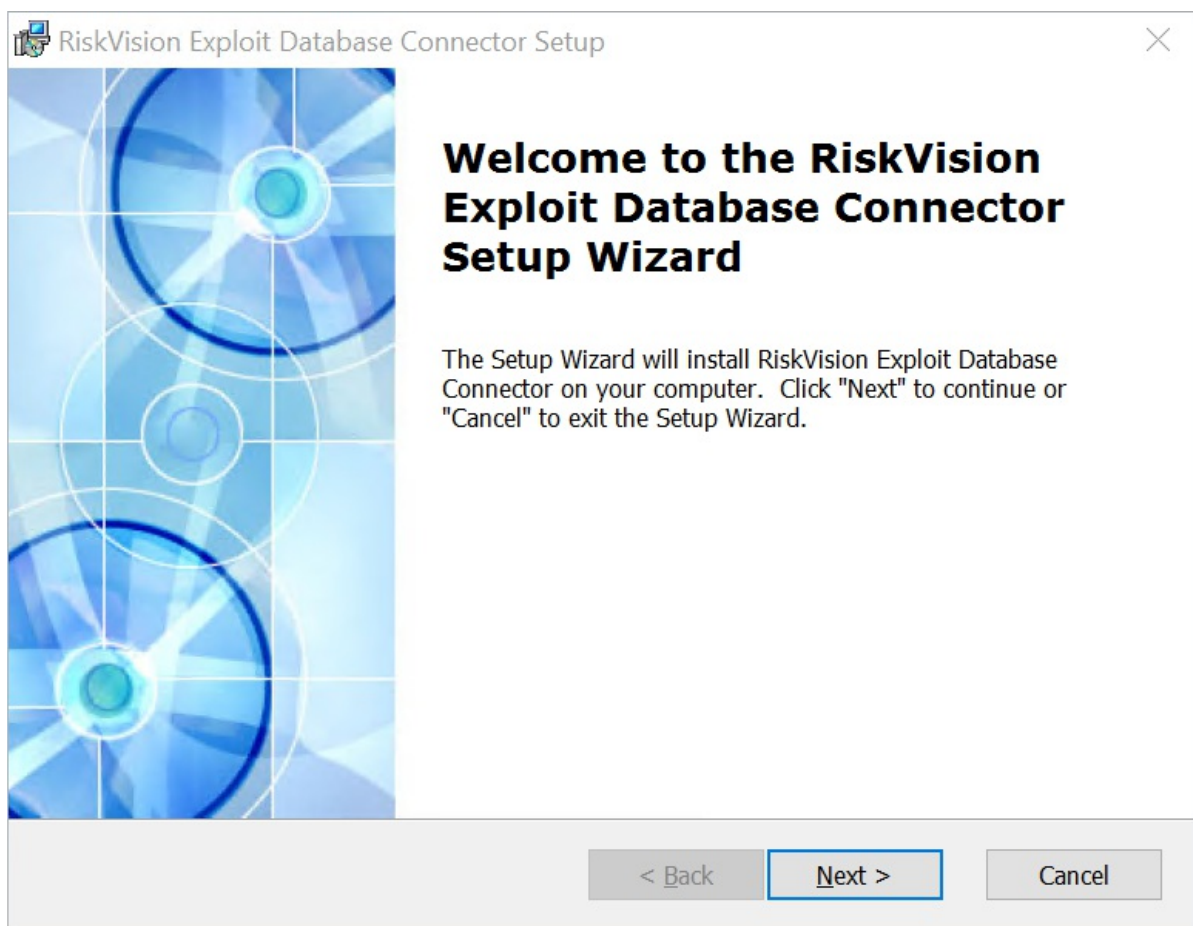
Install the NVD Connector

Resolver recommends that the NVD connector be installed on the same machine as RiskVision. If this is not possible, it can be installed on a remote host server that it has sufficient privileges to connect with the RiskVision server.

Before installing the connector, ensure that all [prerequisites](#) are in place on the desired machine. [GS: I copied the below instructions and screenshots from the Exploit Database connector guide since the steps are all the same, but the screenshots all say Exploit Database on them. Can I get some screenshots that are relevant to the NVD connector please?](#)

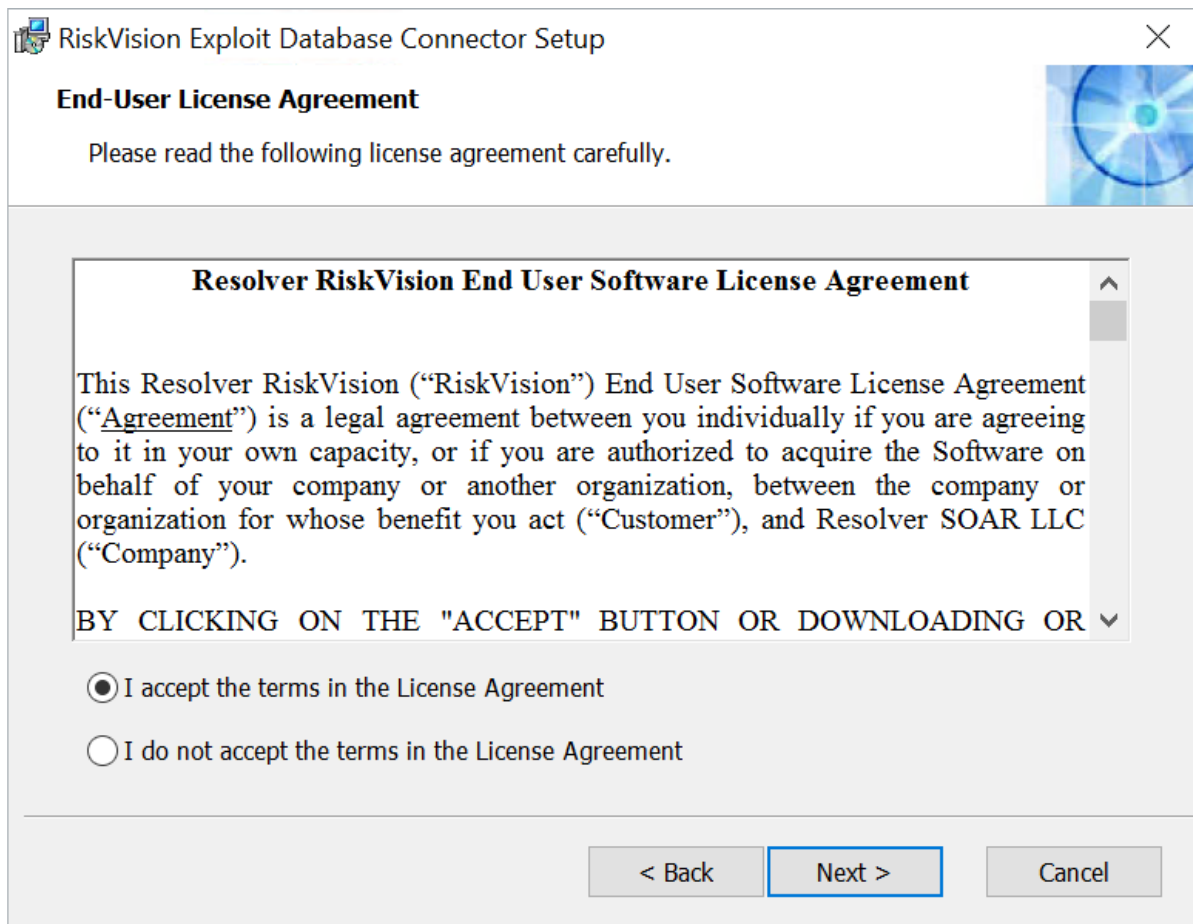
To install the NVD connector:

1. Download the **RiskVisionNVDCorridor.msi** file on the computer where the connector will be installed.
2. Run the file to launch the setup wizard.



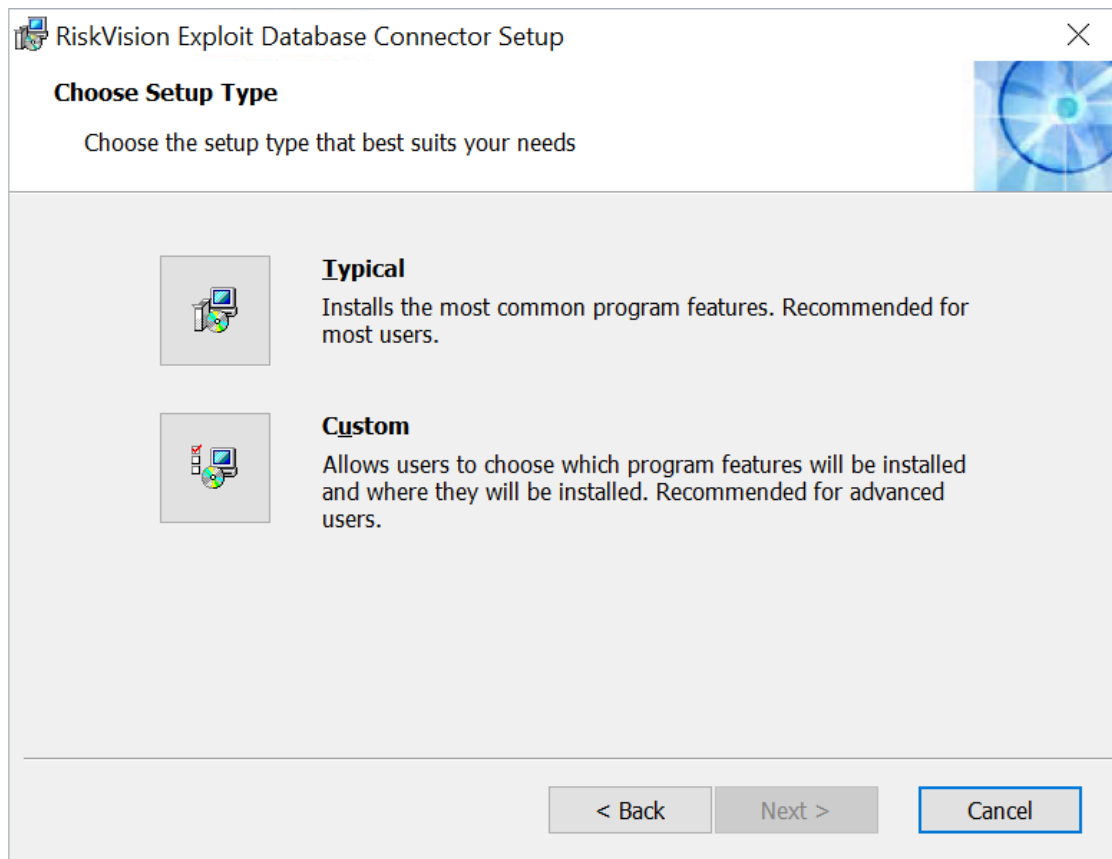
The Exploit Database Connector Setup wizard.

3. Click **Next**.
4. Click **I accept the terms in the License Agreement**



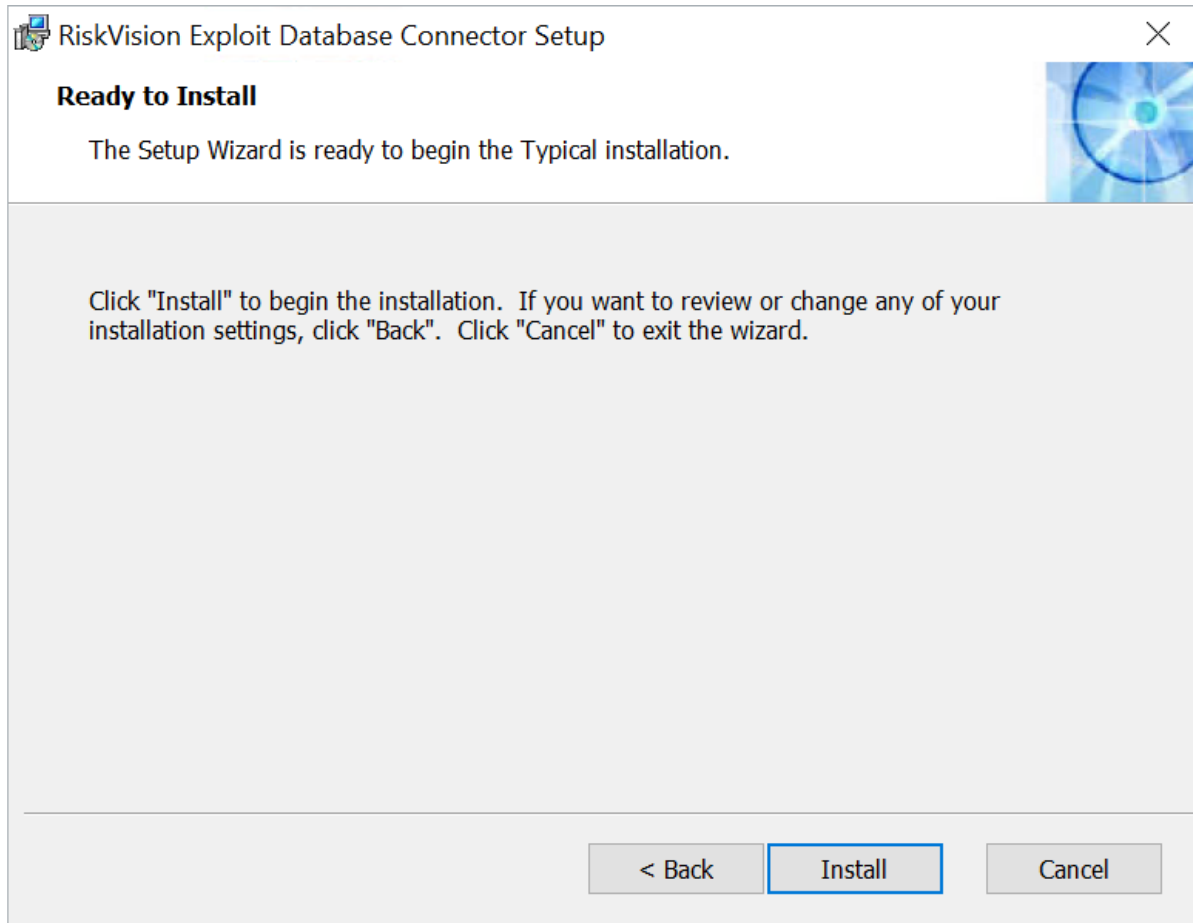
The End-User License Agreement.

5. Click **Next**.
6. Choose one of the following:
 - **Typical:** Installs the connector in the **C:\Program Files (x86)\Agilience** folder by default.
 - **Custom:** Specify the desired location of the connector.



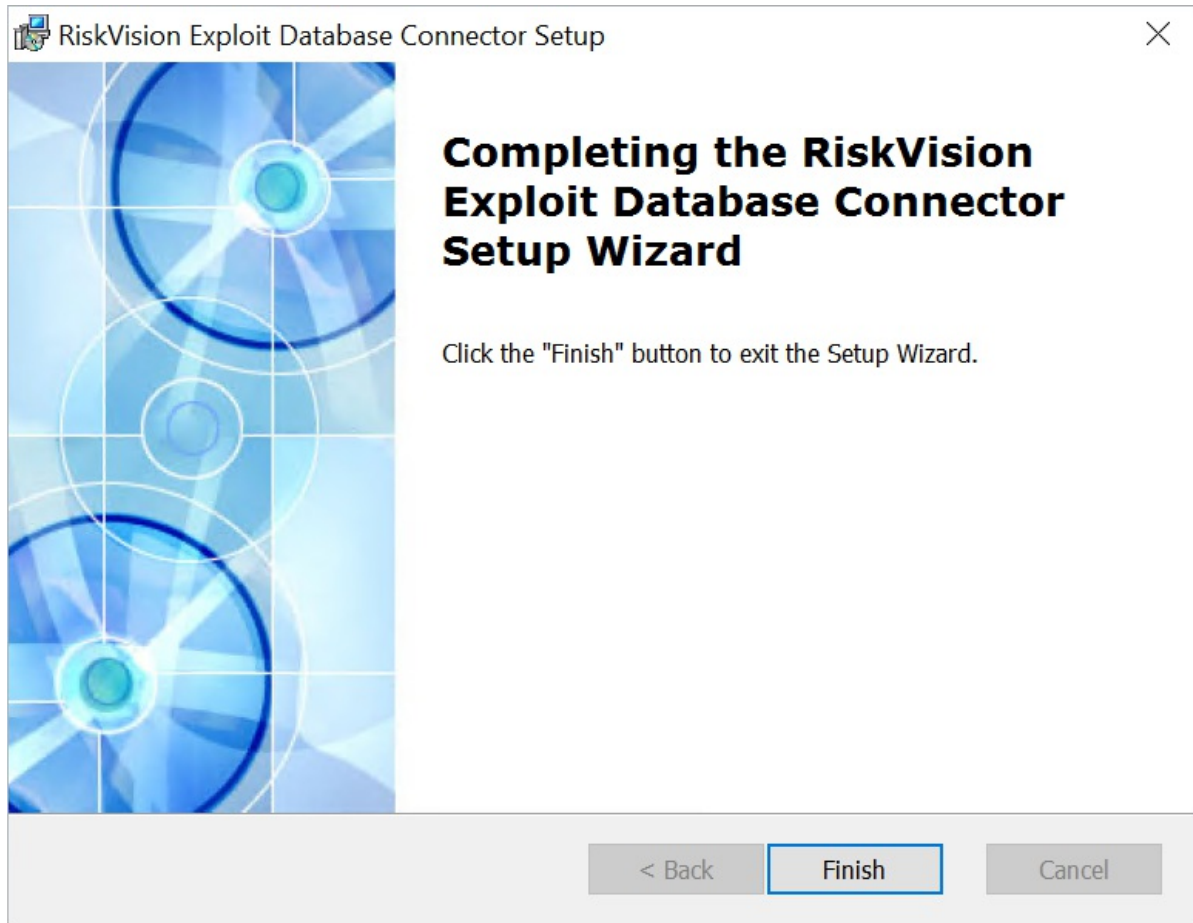
The Choose Setup Type screen.

7. Click **Next**.
8. Click **Install**.



The Ready to Install screen.

9. Click **Finish** to exit the wizard once the installation is complete.



The Completion screen.