



Access & View the Compliance Dashboard

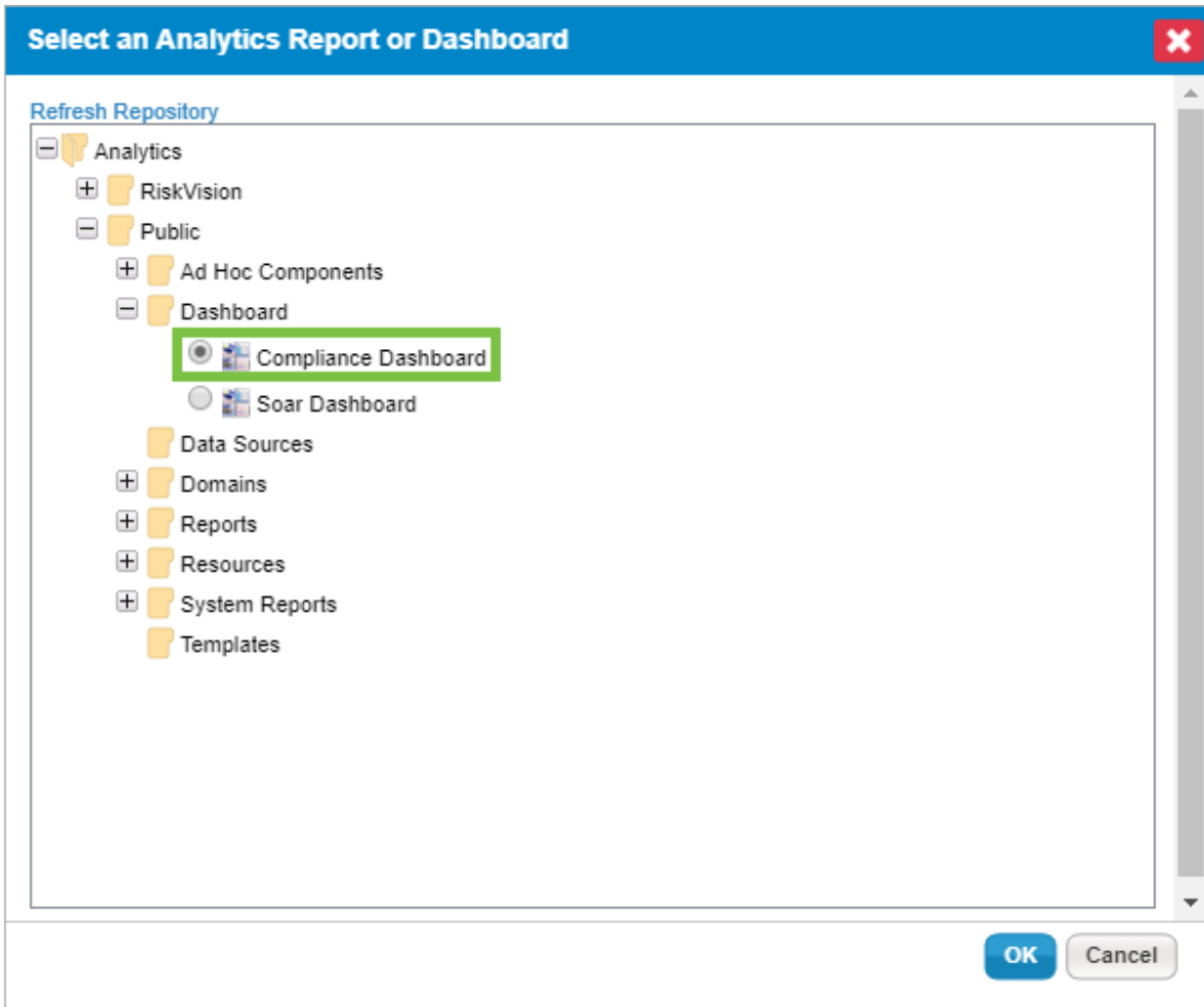
For information on the data displayed on the dashboard, see the [Compliance Dashboard Charts & Data](#) article.

 The **Compliance Dashboard** data is updated via the **Report Summary Builder** (which must be run first) and **Trending Data Collection for CM dashboard** scheduled jobs. See [Manage Jobs](#) for more information.

 This article provides information for individual users and users within a role to access the dashboard. Should your organization wish to select the **Compliance Dashboard** as the default dashboard/home page for every user accessing the application, contact [Resolver Support](#).

Accessing the Dashboard

The dashboard can be added to your **Welcome** page by selecting it as your default dashboard in the **User Settings** or if an administrator selected it as the default for your role. See the [Select a Default Dashboard](#) article (for end-users) or step 6 of the [Create a New Role](#) article (for administrators) for more information. For both of these options, ensure the **Compliance Dashboard** option in the **Analytics > Public > Dashboard** repository is selected.



The Compliance Dashboard in the repository when selecting a default dashboard or home page.

The dashboard can also be accessed through Jaspersoft by hovering your cursor over **Analytics** at the top of the page, then clicking **Analytics and Reporting > View list** in the **Dashboards** section > **Compliance Dashboard**.

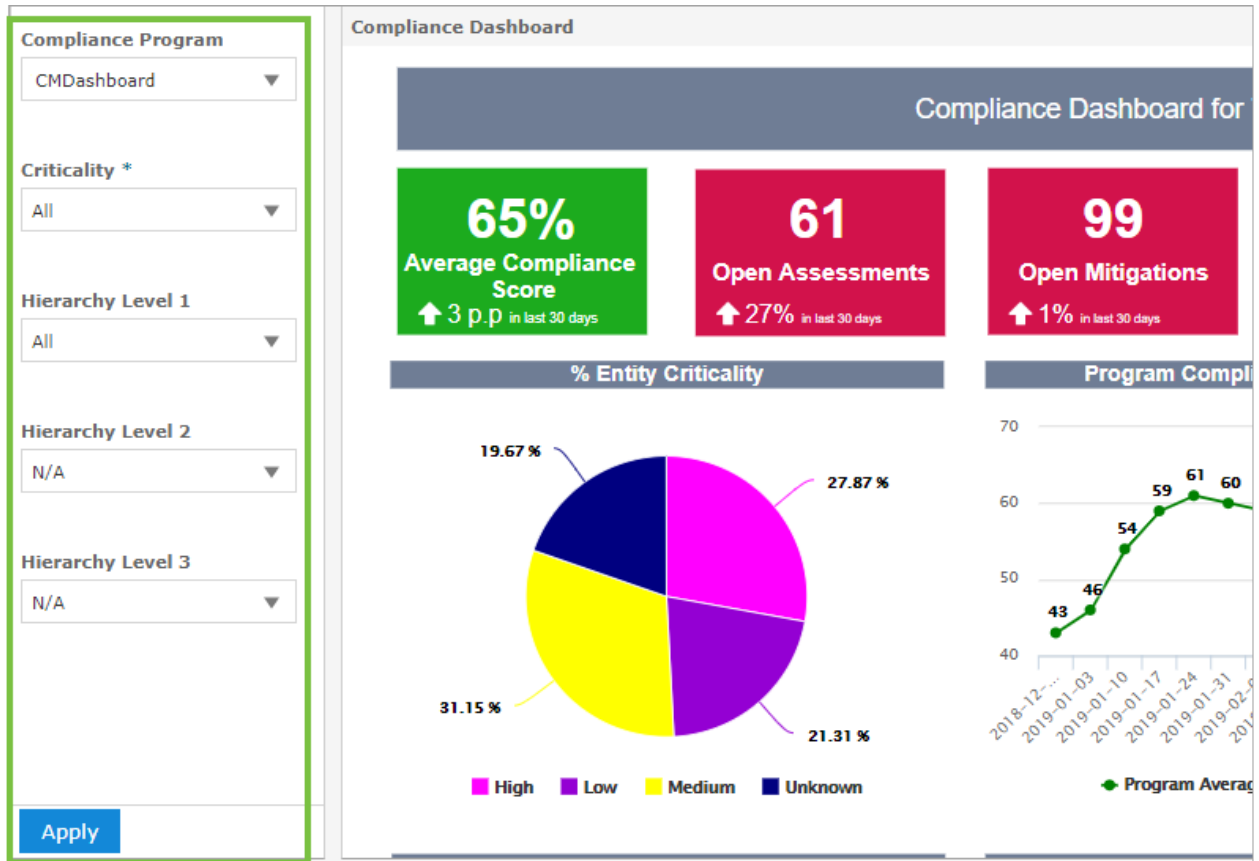
Name	Description	Type	Created D...	Modified D...
Compliance Dashboard		Dashboard	12/24/2018	7/2/2018
Soar Dashboard		Dashboard	12/24/2018	7/20/2017

The Compliance Dashboard in the JasperSoft repository.

Compliance Dashboard Filters

When viewing the dashboard, you can apply filters to refine the data. Filters include **Compliance Program**, **Criticality**, and **Hierarchy Levels 1 through 3**, which provide a business perspective to the dashboard by allowing users to see compliance for the entire organization, a division, or a department.

Clicking **Apply** will apply the filters and save the selections for the currently logged in user, preventing the need to reapply the filters each time the dashboard is viewed.



The Compliance Dashboard filters.

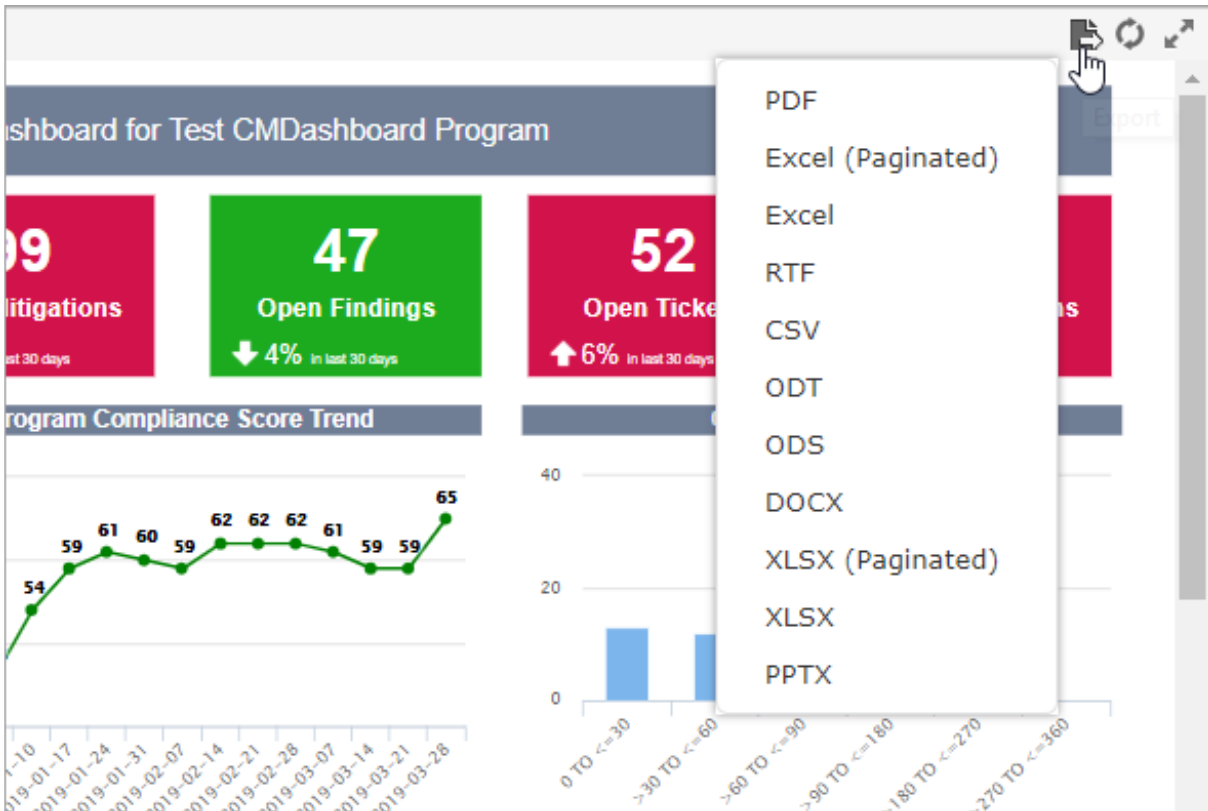
Export, Refresh & Maximize

The **Export**, **Refresh**, and **Maximize** options are accessible at the top-right of the dashboard.

Export file type options include:

- PDF
- Excel (Paginated)
- Excel
- RTF
- CSV
- ODT
- ODS
- DOCX
- XLSX (Paginated)
- XLSX

To export the dashboard, hover your cursor over the **Export**  icon, then click a file option to initiate the download.



The Export file type options.

To display the latest data, click the **Refresh** icon. To hide the filters on the left of the page, click the icon.