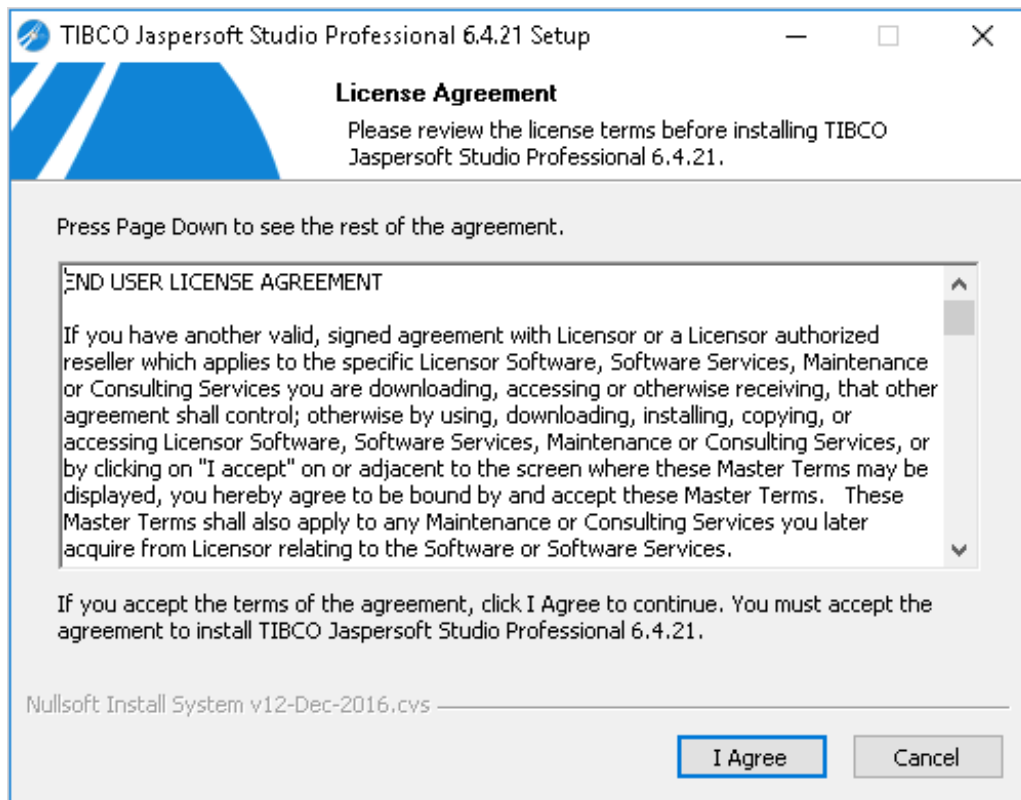


Install TIBCO Jaspersoft Studio Professional 6.4.2.1

This section describes the procedural steps to install the Jaspersoft Studio Professional application.

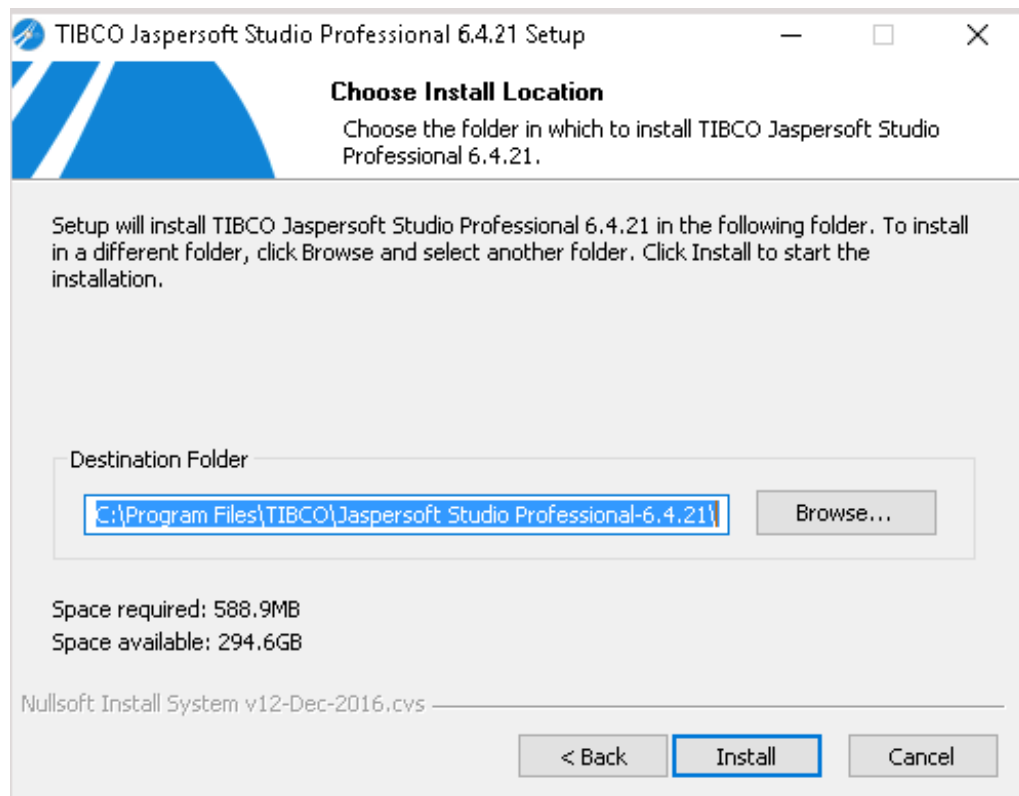
To install TIBCO Jaspersoft Studio Professional:

1. Double-click the TIB_js-jss_6.4.2.1_windows_x86_64.exe file to launch the Jaspersoft Studio Professional 6.4.2.1 Setup wizard.
2. The License Agreement wizard appears.



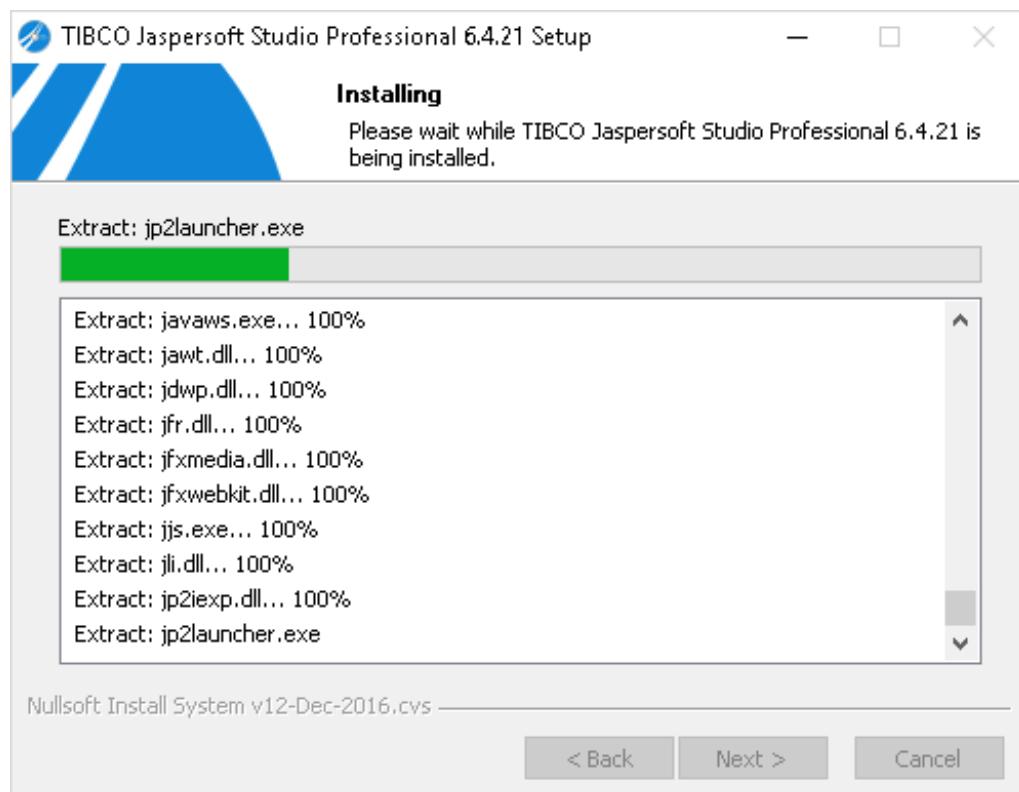
Click **I Agree** to accept the license agreement and to continue.

3. The **Choose Install Location** wizard page appears. By default, Jaspersoft Studio Professional is installed in the `C:\Program Files\TIBCO\Jaspersoft Studio Professional-6.4.2.1.final\` directory. The installer sets the environment variable `%JaspersoftStudio_HOME%` to the product installation path specified here. Observe that the installation folder meets the minimum space criteria. Click **Browse** if the installation folder does not have sufficient space or if you wish to install the Jaspersoft Studio Professional in another directory.

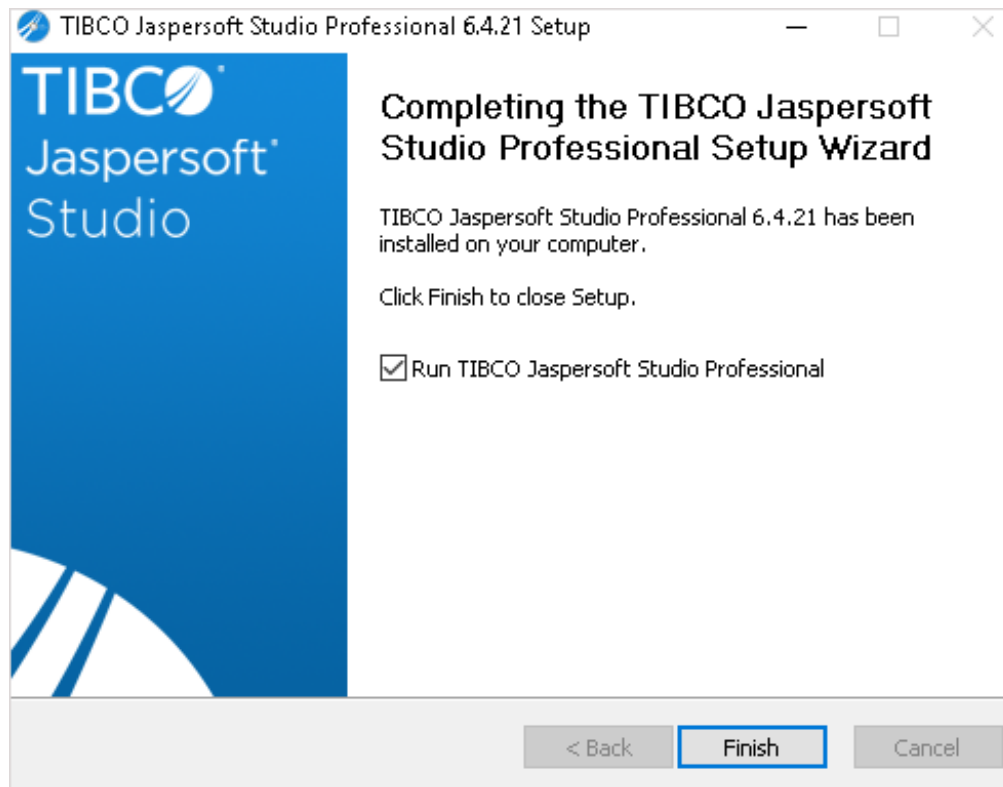


Click **Install** to start installation.

4. The set up now prepares the settings required by the installation scripts based on your previous selection.



5. After the installation is complete, click **Finish** to exit the wizard and to launch the TIBCO JasperSoft Studio Professional application.



6. Perform the following additional tasks to complete the TIBCO JasperSoft Studio Professional installation:
 - Set up a JasperSoft Studio License. See [Installing the JasperSoft Studio Professional License](#) .
 - Set up a connection to the RiskVision database and JasperReports Server repository. See [Setting up JasperSoft Studio Professional](#) .