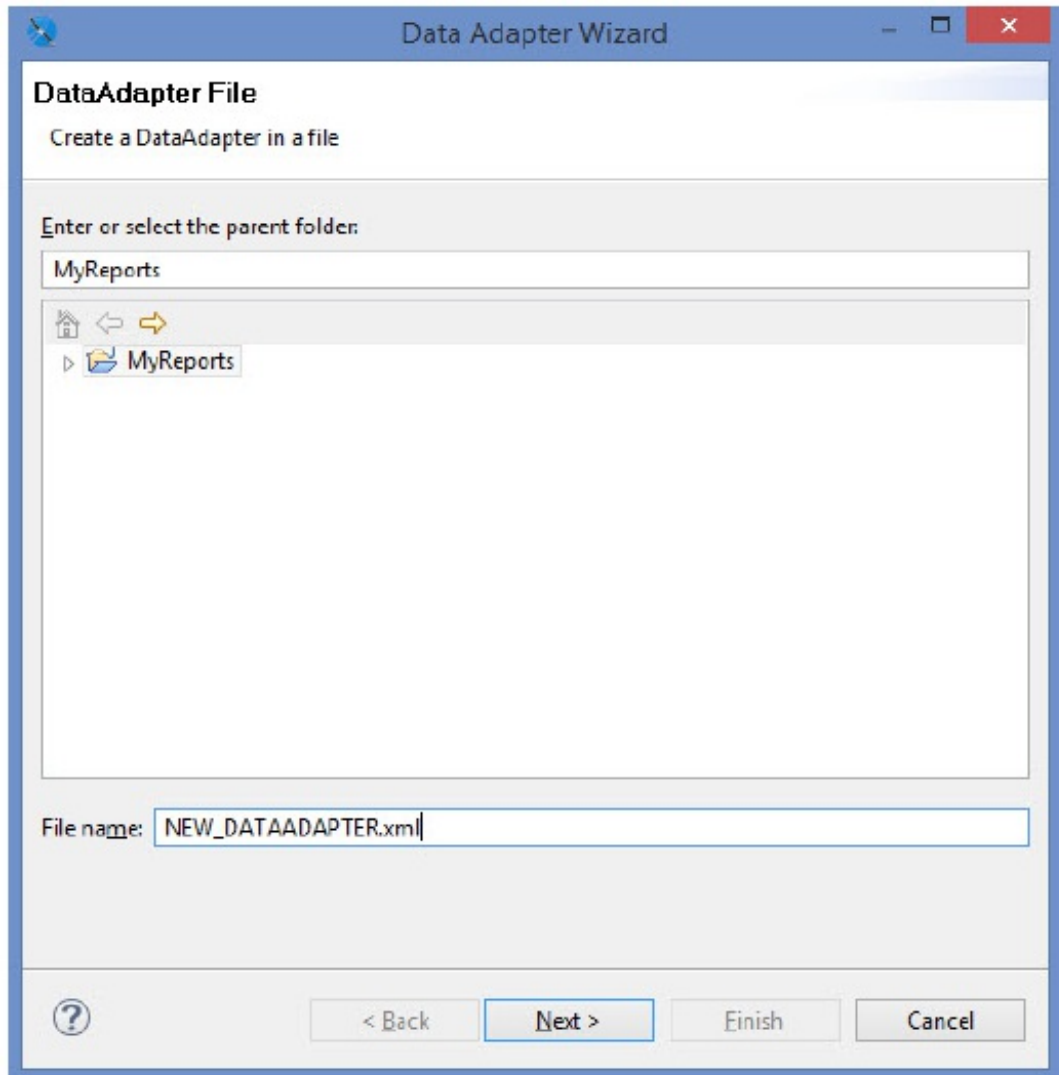


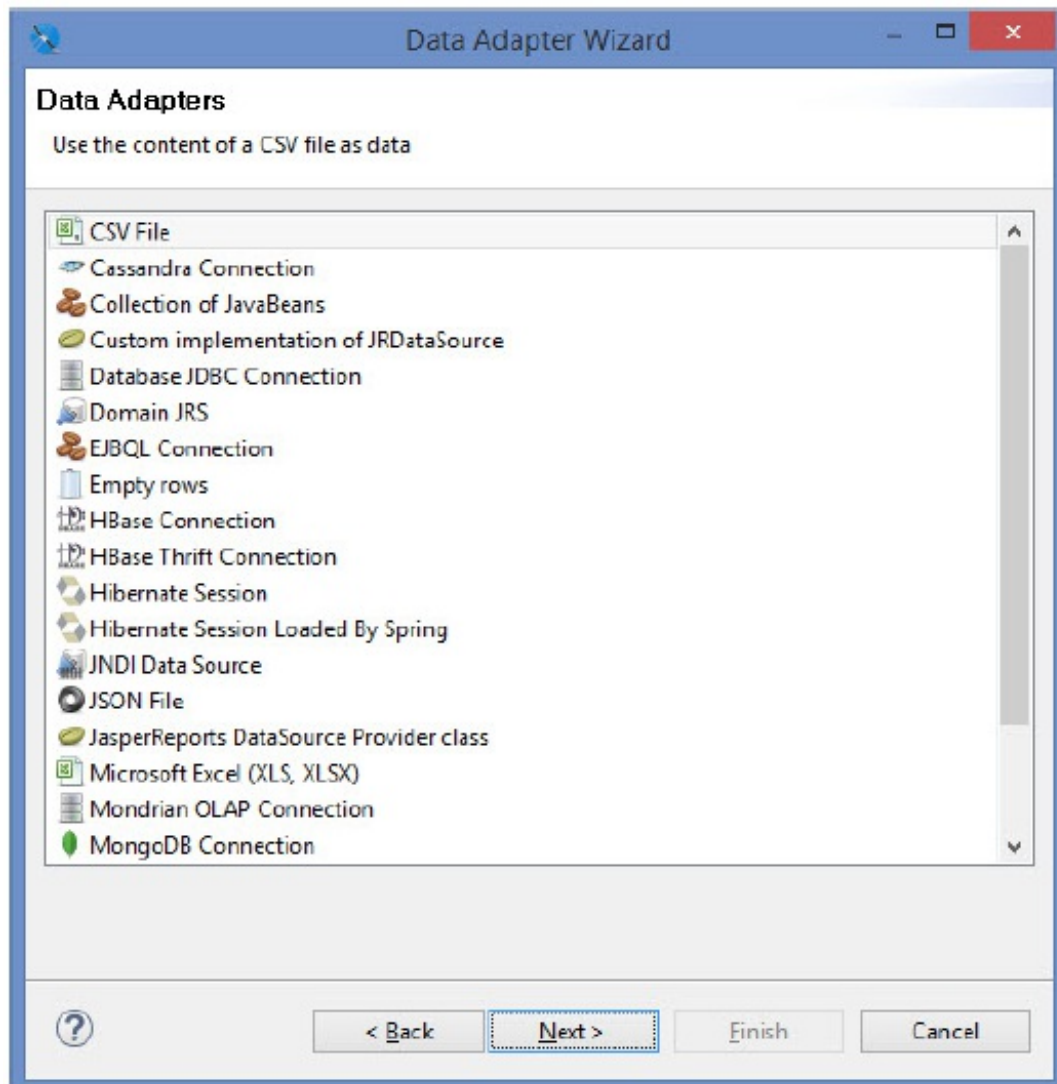
## Create the Database Connection

1. Start the Jaspersoft Studio Professional application.
2. On the **File** menu, click **New > Data Adapter**.
3. The **Data Adapter Wizard** displays the **DataAdapter File** wizard page. Select the parent folder. The data adapter settings, by default, are saved in the NEW\_DATAADAPTER file. Rename the file if required.



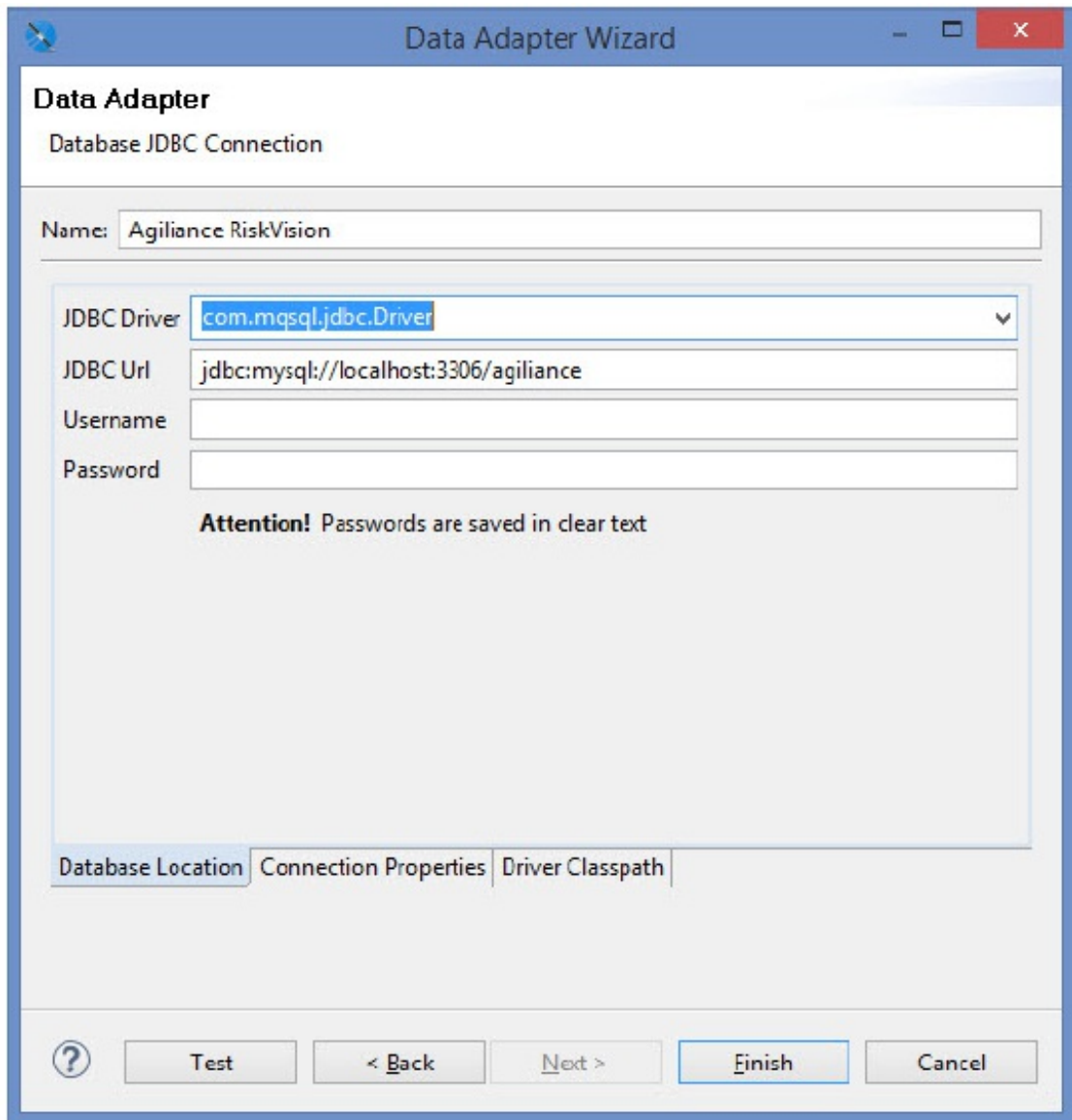
Click **Next** to continue

4. The **Data Adapters** wizard page appears. Select **Database JDBC Connection**.



Click **Next** to continue.

5. The **Database Adapter** wizard page displays the **Database Location** tab. Enter Name, JDBC Driver, JDBC URL, Username, and Password. If your database is MySQL, you must select **com.mysql.jdbc.Driver** in the JDBC Driver drop-down list. If your database is Oracle, you must select **oracle.jdbc.driver.OracleDriver** in the JDBC Driver drop-down list. The JDBC URL pattern for MySQL and Oracle databases is given below:  
**MySQL.** jdbc:mysql://localhost:3306/agiliance  
**Oracle.** jdbc:oracle:thin:@localhost:1521/agl



6. On the Database Adapter wizard page, click the Driver Classpath tab. Click Add and select the jar file for the database from the appropriate directory, and click Open. The JDBC Driver jars file for the MySQL and Oracle databases are given below:

**MySQL.** mysql-connector-java-5.1.39-bin.jar

**Oracle.** ojdbc6.jar

7. Click **Test** to verify the connection.

8. Click **Finish** to save the connection and to exit the **Data Adapter Wizard**. The database connection is created