

Using Entity Collections

An entity collection system is a type of entity (or asset) that behaves as an entity, but refers to a set of entities, such as a system, process, or department. If you prefer to use a name other than entity collection, for example, "System," you can rename the term in the UIDictionary.xml file.

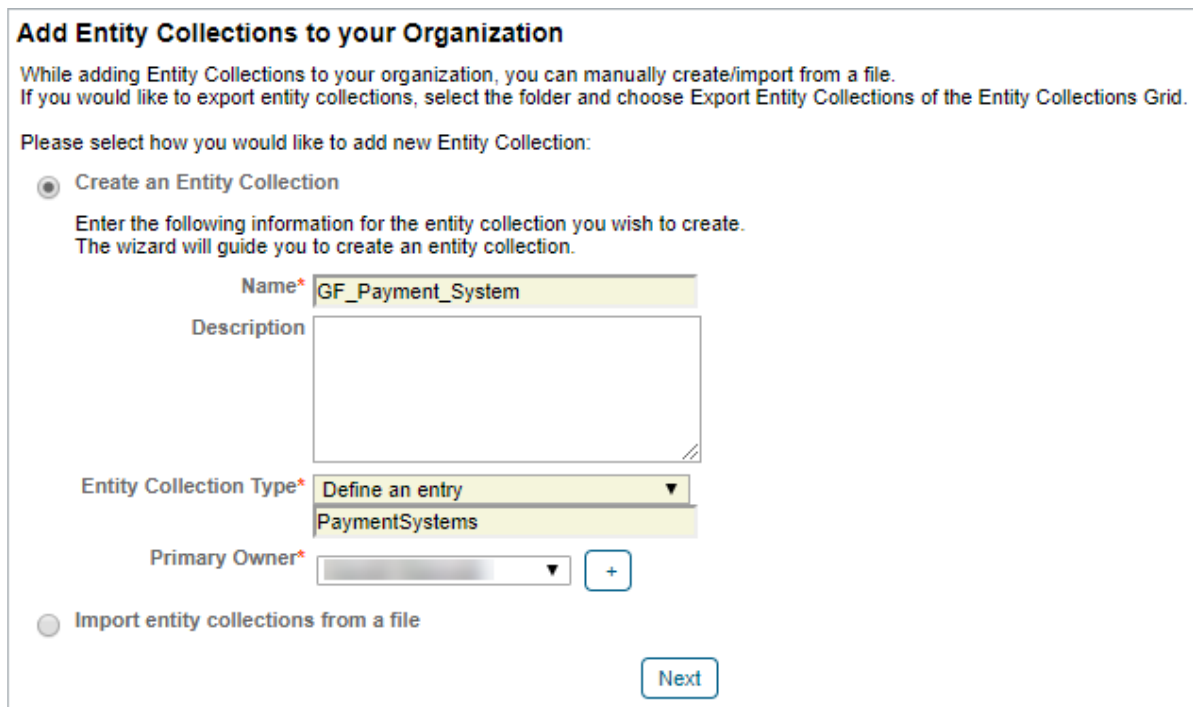
Dynamic groups and organization hierarchy containers with entity collections as members will appear in the navigation pane. An entity collection will appear in the **By Criticality**, **By Type**, or **Organization Hierarchy** pre-configured groups in the **Entity Collections** grid, by default. To add more pre-configured groups to the **Entity Collections** grid, go to **Entities > Group Definitions**, click **Add Pre-Configured Groups**, check the box next to the dynamic groups, and then click **Add Groups**.



The Entity Collections tab.

To create an entity collection:

1. Go to **Entities > Entity Collections** and click **New**.

A screenshot of a web form titled "Add Entity Collections to your Organization". The form contains the following elements:

- A heading: "Add Entity Collections to your Organization".
- Introductory text: "While adding Entity Collections to your organization, you can manually create/import from a file. If you would like to export entity collections, select the folder and choose Export Entity Collections of the Entity Collections Grid."
- A prompt: "Please select how you would like to add new Entity Collection:"
- Two radio buttons: "Create an Entity Collection" (selected) and "Import entity collections from a file".
- Instructions for the "Create" option: "Enter the following information for the entity collection you wish to create. The wizard will guide you to create an entity collection."
- Form fields:
 - "Name*": A text input field containing "GF_Payment_System".
 - "Description": A large text area.
 - "Entity Collection Type*": A dropdown menu with "Define an entry" selected and "PaymentSystems" as an option.
 - "Primary Owner*": A dropdown menu with a blurred selection and a "+" button to the right.
- A "Next" button at the bottom right.

The Add Entity Collections to your Organization screen.

2. Enter a name in the **Name** field.
3. **Optional:** Enter a description in the **Description** field.
4. Click the **Entity Collection** Type dropdown and select a sub type, or define a new subtype. As a logged in user, you will be the primary owner for the entity collection by default. To change the primary owner, choose a name from the **Primary Owner** dropdown list or click +.

5. Click **Next**.
6. Select an organizational hierarchy container from the **Available Hierarchies** section, if available.

The screenshot shows a wizard window titled "Create an Entity Collection" with a close button in the top right. The left sidebar contains a list of steps: 1. Organization (selected), 2. Address, 3. Classification, 4. Ownership, and 5. Entities. The main content area is titled "Step 1: Select the organizational unit of the entity collection" and includes a note: "Skip this option * = required if the group is undefined." Below this is a yellow instruction box: "If there is an organizational unit associated with the entity collection, select it." The main area is divided into two panels: "Available Hierarchies" and "Selected Hierarchies". The "Available Hierarchies" panel shows a table with 3 items: "Datacenter" (Path: /Datacenter), "DNB Group" (Path: /DNB Group), and "HQ" (Path: /HQ). Each row has a checkbox on the left. Above the table is a "Filter by" dropdown set to "Show all" and a "Refresh" button. To the right of the table are ">>" and "<<" buttons. The "Selected Hierarchies" panel is currently empty. At the bottom of the wizard are "Cancel", "< Back", and "Next >" buttons.

<input type="checkbox"/> Name	Path
<input type="checkbox"/> Datacenter	/Datacenter
<input type="checkbox"/> DNB Group	/DNB Group
<input type="checkbox"/> HQ	/HQ

The Organization step of the Create an Entity Collection wizard.

7. Click **Next**.
8. **Optional:** Enter the entity collection's geographic location.

Create an Entity Collection
✕

1. Organization	Step 2: Optionally, enter the geographic location of the entity collection. * = required
2. Address	<p>Skip this step, select an existing location, or choose 'Define a location' to create a new location. Use the other fields to edit the location. Define / Select a location and enter the details for mandatory fields such as Address 1, City, State / Province, Zip Code / Postal Code.</p>
3. Classification	<div style="border: 1px solid #ccc; padding: 10px;"> <p>Primary Address</p> <p>Location <input style="width: 100%;" type="text" value="Select a location"/></p> <p>Address 1 <input style="width: 100%;" type="text"/></p> <p>Address 2 <input style="width: 100%;" type="text"/></p> <p>City <input style="width: 100%;" type="text"/></p> <p>State / Province <input style="width: 100%;" type="text"/></p> <p>Zip Code / Postal Code <input style="width: 100%;" type="text"/></p> <p>Country <input style="width: 100%;" type="text"/></p> <p>Region <input style="width: 100%;" type="text"/></p> <p>Building <input style="width: 100%;" type="text"/></p> <p>Floor <input style="width: 100%;" type="text"/></p> </div>
4. Ownership	
5. Entities	
<input type="button" value="Cancel"/>	<input type="button" value=" < Back"/> <input style="background-color: #0070C0; color: white;" type="button" value=" Next >"/>

The Address step of the Create an Entity Collection wizard.

9. Click **Next**.
10. Classify the new entity collection in terms of confidentiality, integrity, availability, accountability, and classification, and specify if it's internal or external.

Create an Entity Collection
✕

1. Organization

2. Address

3. Classification

4. Ownership

5. Entities

Step 3: Select the criticality ratings and classification labels. * = required

Enter the new entity collection's security requirements, criticality ratings, and classification labels.

▼ Security Requirements

Confidentiality Unknown Low Medium High

Integrity Unknown Low Medium High

Availability Unknown Low Medium High

Accountability Unknown Low Medium High

▼ Classification

Classification Label

Internal or external

Cancel
< Back
Next >

The Classification step of the Create an Entity Collection wizard.

11. Click **Next**.
12. Select a different primary owner, if appropriate. The entity collection must have a primary owner. You can also specify additional owners.

Create an Entity Collection
✕

1. Organization

2. Address

3. Classification

4. Ownership

5. Entities

Step 4: Add owners involved with processes related to the entity collection. * = required

Add owners involved with the processes related to the entity collection. A primary owner is required.

Owners

Primary Owner*

Additional Owners:

Filter by

<input type="checkbox"/> Name	<input type="checkbox"/> Type	Ownership Type
<div style="display: flex; align-items: center;"> i No additional owners defined. </div>		

The Ownership step of the Create an Entity Collection wizard.

13. Click **Next** to continue.
14. Click **Add**.

Create an Entity Collection
✕

1. Organization

2. Address

3. Classification

4. Ownership

5. Entities

Step 5: Entities * = required

Select the entities you would like to add to this entity collection.

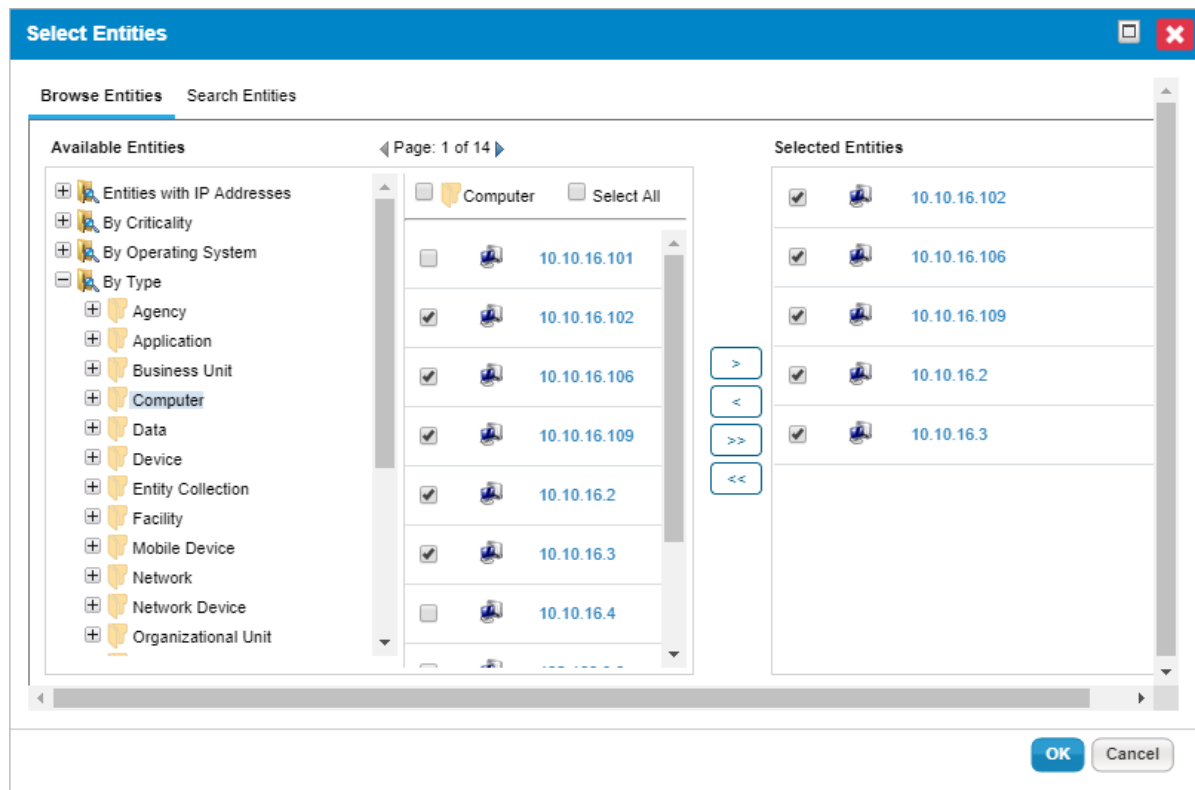
▼ **Entities**

Filter by

<input type="checkbox"/>	Name	Type	Subtype	Criticality	Owner	Description	Dynamic Groups ▲
i No Entities found.							

The Entities step of the Create an Entity Collection wizard.

15. Go to the **Browse Entities** tab > **Available Entities** and select a group. Or, click **Search** to search for an entity. After the entity(s) or group is found, select any appropriate entities, or **Select All**, or select the dynamic group.
16. Click >> to move the entity(s) or group to the **Selected Entities** box, then click **OK**.



The Select Entities dialogue.

When adding a dynamic group or its members:

- Selecting only specific entities within a dynamic group will associate only those entities as members of an entity collection.
- Selecting a dynamic group will associate all entities as members of an entity collection. When members are added or removed from a dynamic group, those dynamic members within an entity collection are updated automatically.
- Select All will associate all entities as members of an entity collection, but not the dynamic group. When members of a dynamic group are added or removed, those dynamic group members within the entity collection are not updated.
- Entities that are a part of more than one dynamic group will be added only once to an entity collection, even if you add all dynamic groups containing that entity.

17. Click **Finish**. The new entity collection will be an 'entity collection' type entity.

To edit an entity collection:

1. Go to **Entities > Entity Collections** and locate the entity collection that you want to edit using the tree and grid views.
2. Click an entity collection name to open.
3. Select the tab with the information that needs to be edited, such as **General**, **Entities**, **Description**, or **Classification**.
4. Click **Edit** and make changes as needed.

5. Click **Save**.

To delete an entity collection:

Entity collections that are not associated with an assessment can be deleted.

1. Go to **Entities > Entity Collections** and locate the entity collection to be deleted using the tree and grid views.
2. Select the checkbox next to the entity collection to be deleted.
3. Click **Delete**, then click **OK**.

Entity collection task limitations

There is currently no predefined template for importing entity collections into RiskVision, so they must be entered manually.