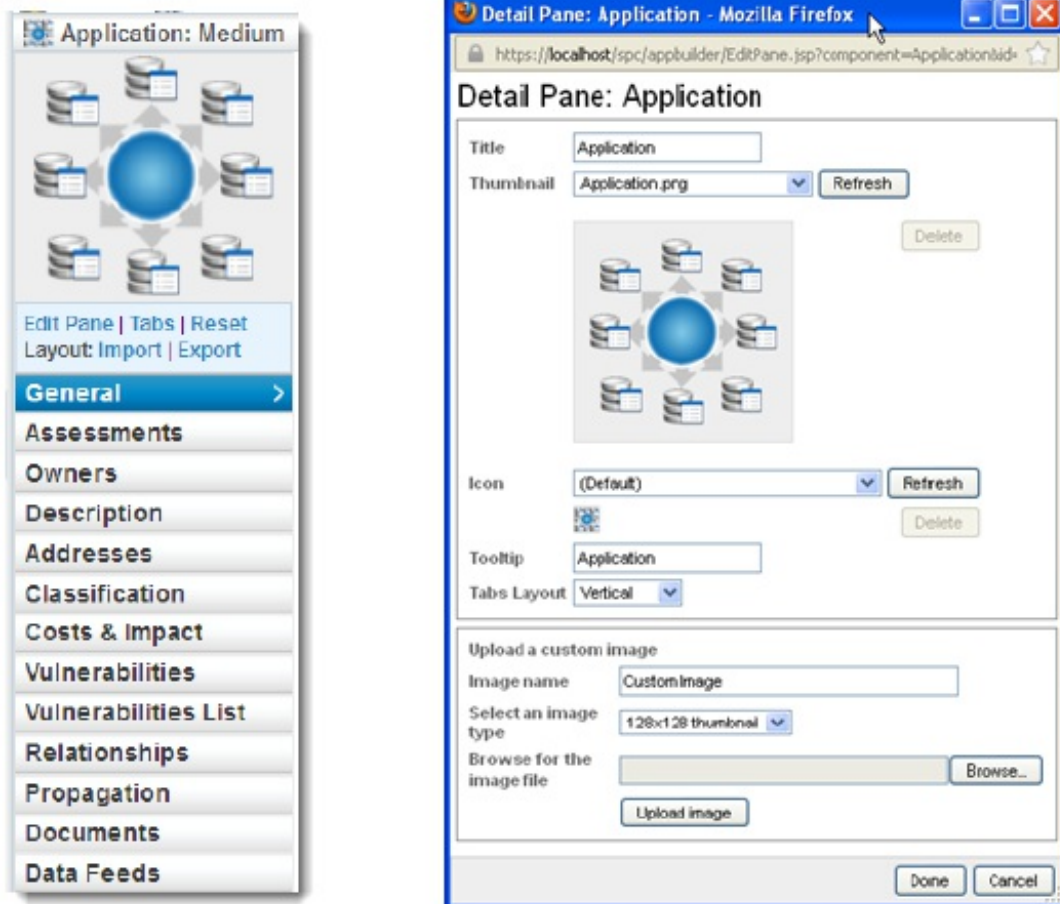


Customizing a RiskVision Object

Each RiskVision object is illustrated with a unique image that can help you identify the object easily among a group of several objects. Usually, this is helpful when a new object type is defined in RiskVision. For example, you can incorporate an image to represent the newly created entity type.

To change the object image:

1. In the RiskVision application, select any object to open its details and then click **Edit Pane**.



2. In the **Upload a custom image** section, enter **Image name**, select an **image type**, and click **Browse** to select an image. Selecting the **128x128 thumbnail** image type will change the image, which appears on top of object tabs, whereas selecting the 16x16 icon image type will change the image, which appears next to the object name, and in the breadcrumb, which appears on top of object details.
3. Click **Upload image** and select the newly added image in the Thumbnail drop-down list.
4. To add icon, repeat step 1 and step 2.
5. To delete custom images, click **Delete**.
6. An object's tabs appearance can be changed to display horizontally or vertically. To change the layout, select **Horizontal** or **Vertical** from the **Tabs Layout** drop-down list.
7. Click **Done** after all the changes have been made and then click **Save** to retain the customization permanently.

