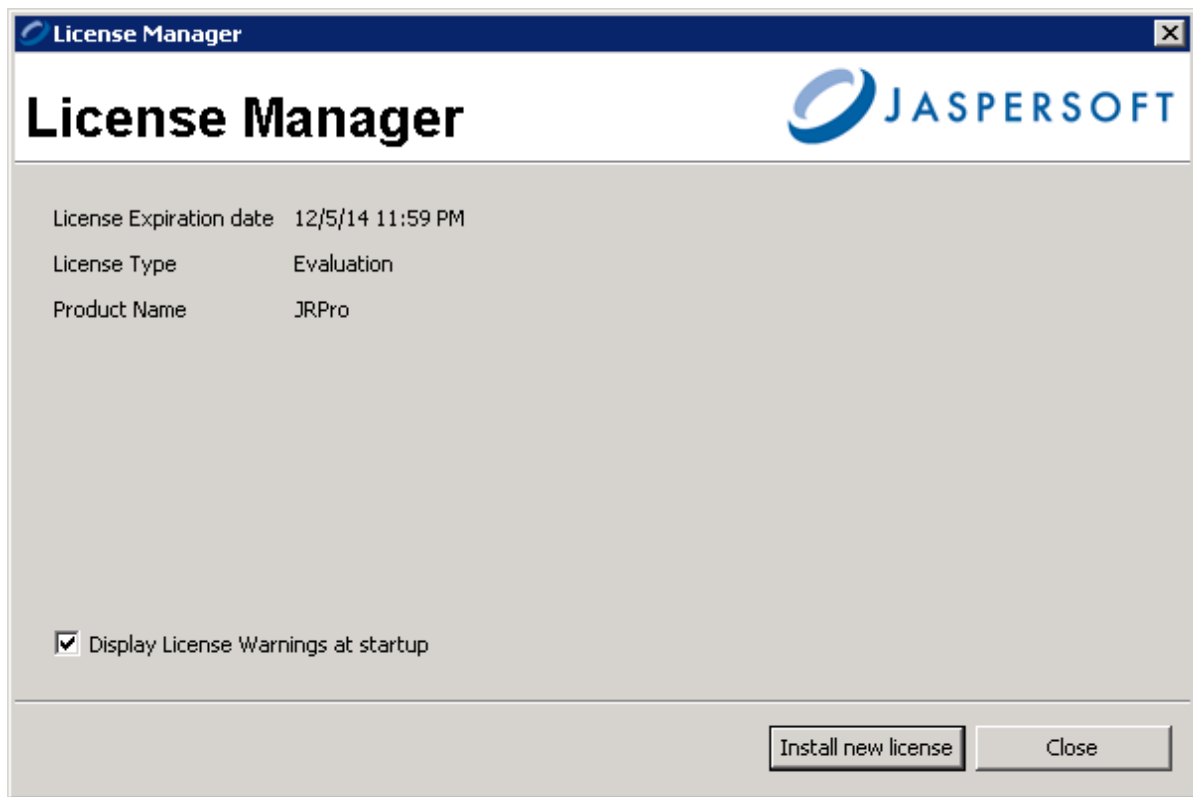


Install the Jaspersoft Studio Professional License

After completing the installation of Jaspersoft Studio Professional, you'll need to install the Jaspersoft Studio Professional application license.

To install the license:

1. Obtain the `jasperserver.license` file from the JasperReports Server installation directory. The default location is `%JASPER_HOME%\.` Place it in a temporary folder if you have installed the Jaspersoft Studio Professional application on a host other than the JasperReports Server.
2. Go to **Start > All Programs > TIBCO > Jaspersoft Studio Professional** to launch the Jaspersoft Studio Professional application.
3. Go to **Help**, then click **License Manager**.



The License Manager dialog.

4. Click **Install new license**.
5. Select the `jasperserver.license` file from the appropriate location, then click **Open**.
6. Click **OK**, then click **Close**.

To set up a connection to the RiskVision database and JasperReports Server repository, see [Setting up Jaspersoft Studio Professional](#).