

Displaying Entity Details

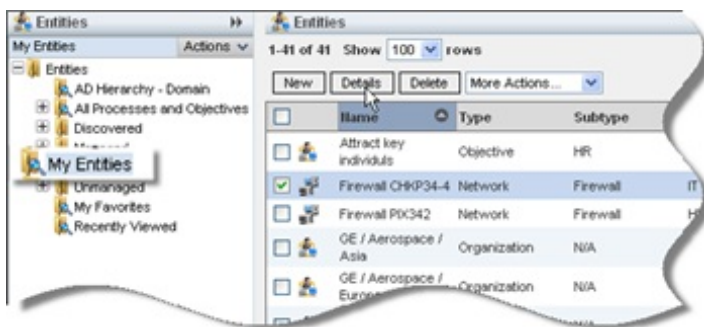
There are a few ways to open the entity details pane from other menus, such as opening the Assessment Details page will provide an Entity Details tab. This section explains how to open the details from the Entities menu. To view and search an entity, you must have the Entity View permission. In general, entities are visible only to the respective primary owners. However, as a primary owner, if you nominate one more user as business owner for a particular entity, for example, then such a business owner has the permission to view that particular entity.

Find an entity by entering part or all of the name in the search field and click **Search**.



To display an entity details pane:

1. Go to **Entities > Entities**.
2. Select the group, such as My Entities, to display the Entity list.



3. Select the entity and click **Details**. The **Entity Details** page is displayed.

A screenshot of the "Entity Details" page for a "Network Device: Router 25006". The page has a left sidebar with a menu including "General", "Owners", "Description", "Addresses", "Classification", "Costs & Impact", "Relationships", "Propagation", "Documents", "Assessments", "Vulnerabilities", "System Details", "Data Feeds", and "Exceptions". The main content area is divided into sections: "Information" (with sub-sections "Information" and "Maintenance"), "Entity Management", and "Organization Hierarchy". The "Information" section lists fields like Name, Description, Entity type, and Manufacturer. The "Maintenance" section lists fields like Installation date, Last maintenance date, and Warranty expiration date. The "Entity Management" section shows tracking information and data source details. The "Organization Hierarchy" section has a table with columns "Organization Root", "Path", and "Description", and a message "No assigned Hierarchies found." at the bottom.

